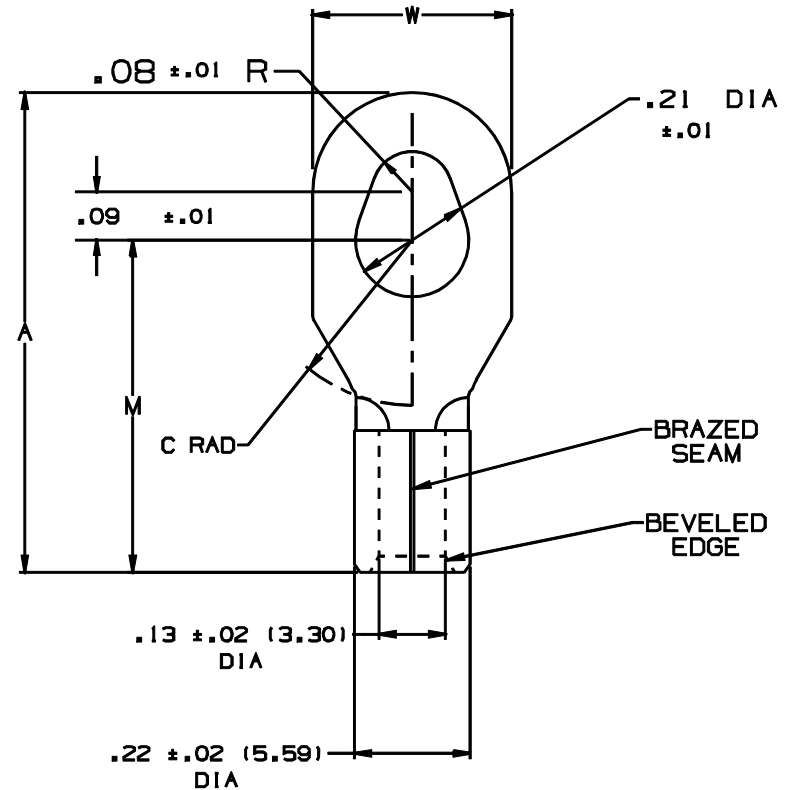


THIS COPY IS PROVIDED ON A RESTRICTED BASIS AND IS NOT TO BE USED IN ANY WAY DETRIMENTAL TO THE INTERESTS OF PANDUIT CORP.

PANDUIT PART NUMBER	STUD SIZE	DIMENSIONS in.			
		A $\pm .03$	W $\pm .01$	C $\pm .02$	M $\pm .03$
P10-610R	#6, #8, #10	.90 (22.9)	.37 (9.4)	.31 (7.9)	.62 (15.8)



NOTES:

- UL LISTED AND CSA CERTIFIED FOR:
  - #14-10 AWG SOLID OR STRANDED COPPER WIRE
  - 302° F (150° C) MAX. TEMP. RATING
- MATERIAL:
  - STAMPING - .04" (1.02) THK COPPER, TIN PLATED
- PACKAGE QTY: STD. PKG. -L=50  
BULK PKG. -D=500
- DIMENSIONS IN BRACKETS ARE IN MILLIMETERS
- INSTALLATION TOOLS:
  - UL LISTED AND CSA CERTIFIED: CT-100, CT-200, CT-570, CT-1570
  - PANDUIT APPROVED: CT-160, CT-260
- WIRE STRIP LENGTH:  $9/32^{+1/32}_{-0}$  (7.1  $^{+8}_{-0}$ )



A41590\_01

				<b>PANDUIT</b> CORP. TINLEY PARK, ILLINOIS							
01	1/01	KMD	FILE SPEC. WAS N41590AA_PCD_01			P10-610R, NON-INSULATED MULTI-STUD TERMINAL					
00	3/96	ED	RELEASED	04178							
REV	DATE	BY	CHK	DESCRIPTION	ECN #	CUST	PM	DRAWN BY EJD	CHK'D	SCALE NONE	DRAWING NO. A41590